



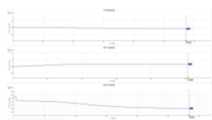
The wireless optical DO sensor measures the concentration of oxygen dissolved in solution. You can express oxygen concentration in milligrams per liter (or ppm).

Wireless DO sensors use the latest optical technology, making them easier to use.


- Accurate and low maintenance optical dissolved oxygen technology (luminescent quenching)
- Integrated (probe-mounted) waterproof pressure sensor
- Automatic temperature and pressure compensation
- Automatic salinity compensation with user-input conductivity/salinity concentration value
- Convenient sensor cap replacement with integrated calibration coefficients

It supports both Bluetooth classic mode and low power mode, so it can be used on various smart devices, and can also be connected to a PC via USB.

You can use various functions through the dedicated app (Science#).



Example: water quality measurement

* Download 



Technical data

■ Measurement performance	Range	0 ~ 50 mg/L (ppm)
	Resolution *	0.01 mg/L
	Accuracy	0-100%(10 mg/L) < ± 1% 100-200%(20 mg/L) < ± 2 %"
	Sampling Rate	100 Samples/second
■ General Conditions	Display	OLED 0.96" (128*64 pixel)
	Operating Power	Li-Poly Rechargeable Battery (700mAh)
	Power Consumption	0.5W
	Power Requirements	USB (DC 5V, 0.5A)
	Battery life **	Approximately 6 hours(after full charge)
	Wireless Connection	Bluetooth 5.0 or 2.1+EDR
	Wired Connection	USB 2.0(Type-C)
	Operating Environment	0 to 50°C, Max. 85%RH
	Compliance	EN 61326-1, EN 55011, EN 55032, EN 301. CE, RoHS, REACH, SMD070
■ Mechanics specifications	Dimension(WxLxH,mm)	2100 * 50 * 24.7 mm Body 80 * 50 * 24.7 Electrode OD 12 * 2,000
	Weight	170g (6 oz)
	Housing Materials	PC+ABS
	Housing Protection	IP30

* This resolution can be viewed through the Science# application.

** Battery life varies by use, configuration, temperature, and many other factors; actual results will vary.

■ Product Appearance Design



■ Notices

- This product is to be used for educational purposes only. It is not appropriate for industrial, medical, research, or commercial applications.
- Our products and the contents are subject to change without any notice. In consequence we cannot assume responsibility for any consequential or other damage resulting from the use of this instrument.

Revised Feb. 2024