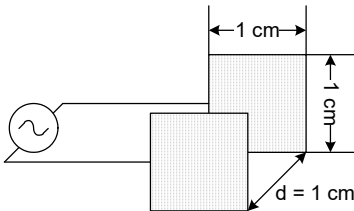




The wireless conductivity sensors can be used to measure either conductivity of solution or total ion concentration of aqueous samples being investigated in the field or the laboratory. Conductivity measurement is the easiest method for environmental testing of aqueous samples. Even though it does not tell you specific ions that are present, it does quickly determine the total concentration of ions in a sample. It can be used to perform a wide variety of tests or planned experiments to determine the changes in or levels of total dissolved ions or salinity.

The ScienceCube® Conductivity Probe also has a cell constant of 1.0 cm⁻¹,



It supports both Bluetooth classic mode and low power mode, so it can be used on various smart devices, and can also be connected to a PC via USB.

You can use various functions through the dedicated app (Science#).

* Download 



Technical data

■ Measurement performance	Range	0 ~20,000 uS/cm (20mS/cm)
	Resolution *	0.01 mS/cm
	Sampling Rate	100 Samples/second
	Cell constant	1.0 cm ⁻¹
■ General Conditions	Display	OLED 0.96" (128*64 pixel)
	Operating Power	Li-Poly Rechargeable Battery (700mAh)
	Power Consumption	
	Power Requirements	USB (DC 5V, 0.5A)
	Battery life **	Approximately 4 hours(after full charge)
	Wireless Connection	Bluetooth 5.0 or 2.1+EDR
	Wired Connection	USB 2.0(Type-C)
	Operating Environment	5 ~ 35°C (Automatic Compensation)
	Compliance	EN 61326-1, EN 55011, EN 55032, EN 301. Ⓜ 202-SMD070
■ Mechanics specifications	Dimension(WxLxH,mm)	"224 * 50 * 24.7 mm Body 80 * 50 * 24.7, Electrode OD 12 * 145"
	Weight	80 g (2.8 oz)
	Housing Materials	PC+ABS, POM+ABS
	Housing Protection	IP30 IP67 (Only electrode probe)

* This resolution can be viewed through the Science# application.

** Battery life varies by use, configuration, temperature, and many other factors; actual results will vary.

■ Product Appearance Design



■ Notices

- This product is to be used for educational purposes only. It is not appropriate for industrial, medical, research, or commercial applications.
- Our products and the contents are subject to change without any notice. In consequence we cannot assume responsibility for any consequential or other damage resulting from the use of this instrument.

Revised Feb. 2024